

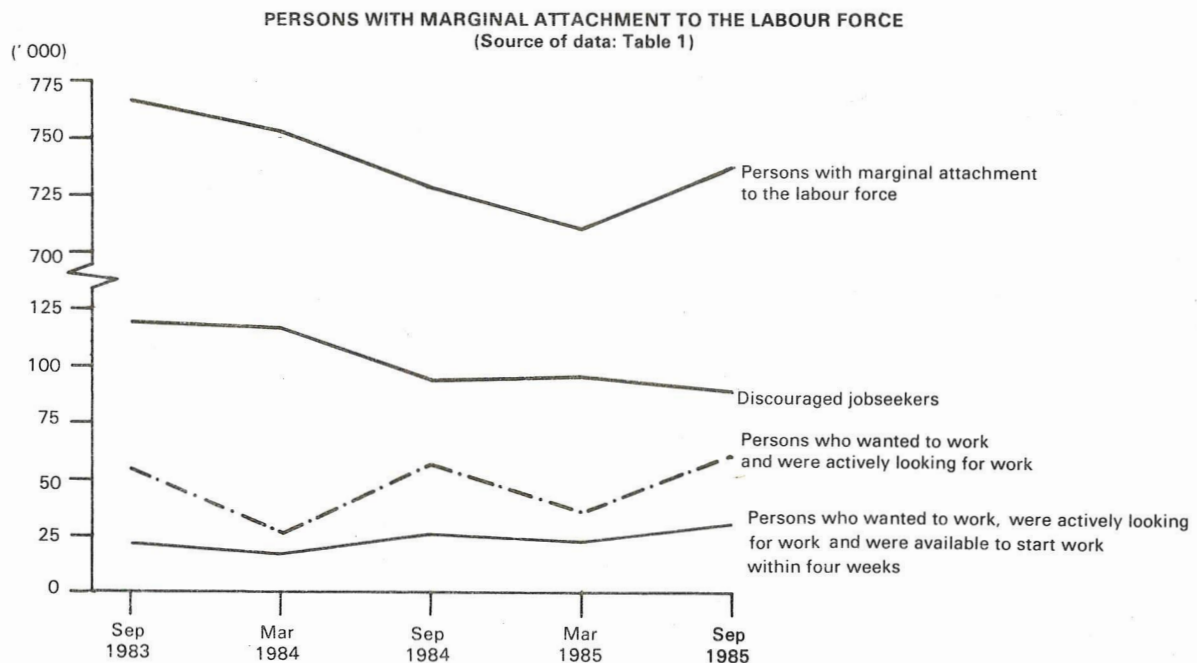


PERSONS NOT IN THE LABOUR FORCE, AUSTRALIA, SEPTEMBER 1985 PRELIMINARY

PHONE INQUIRIES *for more information about these statistics*—contact Ms Gail Carters on Canberra (062) 52 6503 or any of our State offices.
other inquiries including copies of publications—contact Information Services on Canberra (062) 52 6627 or in any of our State offices.

MAIL INQUIRIES *write to* Information Services, ABS, P.O. Box 10, Belconnen, A.C.T. 2616 or any of our State offices.

MAIN FEATURES



In September 1985 there were 4,626,900 persons aged 15 and over who were not in the labour force (38.6 per cent of the civilian population in the same age group). Most (69.8 per cent) of these were females.

There were 739,700 (16.0 per cent) persons not in the labour force who were considered to have marginal attachment to the labour force in September 1985, of whom 214,000 (28.9 per cent) had looked for work in the last twelve months.

Although the number of persons not in the labour force has increased between September 1983 and September 1985, the number of persons with marginal attachment has decreased over the same period.

There were 89,000 persons with marginal attachment who were discouraged jobseekers in September 1985 (compared with 118,200 in September 1983). 32,000 (36.0 per cent) had looked for work in the last twelve months. Although most discouraged jobseekers had had a previous job (80,600 or 90.6 per cent), only 13,700 (15.4 per cent) had had a job within the last twelve months.

Note: Survey estimates are subject to sampling variability, as explained in paragraph 20 following.

EXPLANATORY NOTES

Introduction

The monthly Population Survey (which is described in *The Labour Force, Australia* (6203.0)) comprises the monthly labour force survey and supplementary topics. This publication contains some results of a supplementary survey run in association with the September 1985 labour force survey conducted throughout Australia.

2. Of the respondents to the labour force survey, those who fell within the scope of the supplementary survey were asked additional questions. This subset of respondents was asked about their labour force aspirations and, if appropriate, their reasons for not actively looking for work and their availability for work.

Scope

3. The scope of this supplementary survey was the same as that used for the labour force survey (described in full in *The Labour Force, Australia* (6203.0)) except that it was restricted to persons not in the labour force.

Definitions

4. Persons not in the labour force are by definition those persons who do not meet the criteria that would enable them to be classified as being in the labour force. To be classified as being in the labour force, a person must be aged 15 or over and be either *employed* or *unemployed*.

5. *Persons not in the labour force*, therefore, include all persons aged 15 and over who are not employed, who want work but do not meet the criteria to be classified as unemployed; who do not want to work; or who through incapacity or infirmity cannot work.

6. The criteria determining those in the labour force are based on actual activity (i.e. working or looking for work) during the survey week. The criteria associated with marginal attachment to the labour force, in particular the concepts of wanting to work, reasons for not actively looking for work and availability to start work, are more subjective and are not based on respondents' actual activity. Hence, the measurement of these criteria is affected by the respondents' own interpretation of the concepts used. Individual respondent's interpretation is affected by such factors as the respondent's work aspirations, as well as family, economic and other commitments.

7. *Persons with marginal attachment to the labour force* are those who were not in the labour force in the survey week, wanted to work and:

- (a) were actively looking for work but do not meet the criteria to be classified as unemployed; or
- (b) were not actively looking for work but were available to start work within four weeks.

8. *Persons not in the labour force who wanted to work* are those who:

- (a) in the four weeks up to the end of the survey week had taken *active steps* to find work but do not meet the criteria to be classified as unemployed; or
- (b) although claiming to have looked for work in the four weeks up to the end of the survey week, had not taken *active steps* to find work; or
- (c) in the four weeks up to the end of the survey week had not looked for work but in the survey answered 'yes' or 'maybe' to the question '*Even though you have not been looking for work would you like a full-time or part-time job?*'.

9. *Discouraged jobseekers* are those persons with marginal attachment to the labour force who wanted to work and were available to start work within four weeks but whose main reason for not taking active steps to find work was that they believed they would not be able to find a job for any of the following reasons: considered by employers to be too young or too old; difficulties with language or ethnic background; lacked the necessary schooling, training, skills or experience; no jobs in their locality or line of work; or no jobs at all.

10. *Active steps taken to find work* comprise writing, telephoning or applying in person to an employer for work; answering a newspaper advertisement; checking factory or Commonwealth Employment Service noticeboards; being registered with the Commonwealth Employment Service; checking or registering with any other employment agency; advertising or tendering for work; and contacting friends or relatives.

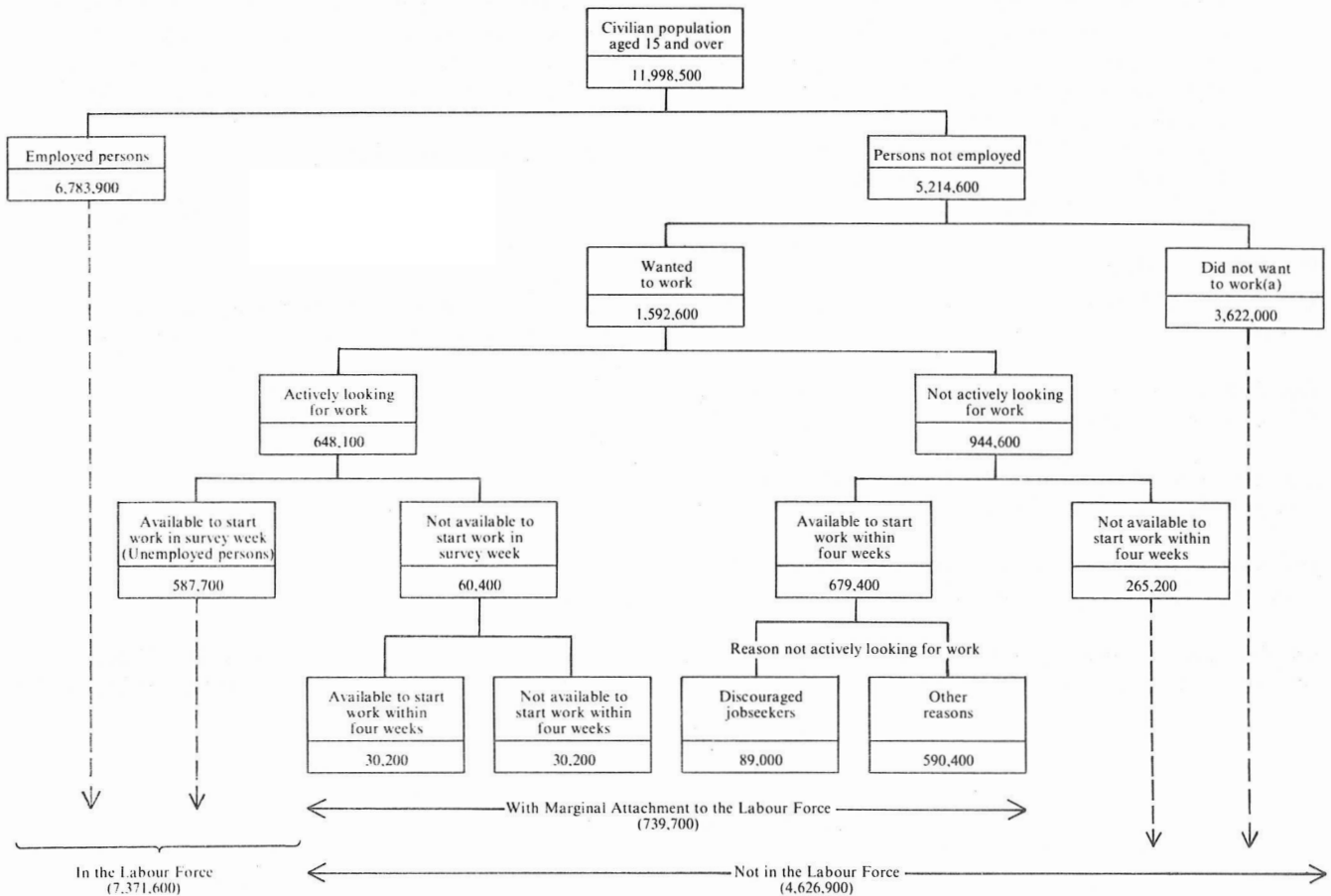
11. A *job* is any paid employment, full-time or part-time, lasting two weeks or more.

12. Unless otherwise stated, all characteristics referenced in this publication are as at the survey week.

13. Further definitions of labour force and demographic classifications appearing in this publication are given in *The Labour Force, Australia* (6203.0)

14. The various groups of persons either in the labour force or not in the labour force, including those marginally attached to the labour force, are shown schematically in the diagram on the following page.

RELATIONSHIP OF PERSONS WITH MARGINAL ATTACHMENT TO THE LABOUR FORCE TO PERSONS IN OR NOT IN THE LABOUR FORCE, SEPTEMBER 1985



(a) Includes institutionalised, boarding school pupils and persons permanently unable to work.

Results of the survey

15. This publication contains only a summary of the results of the survey. Estimates shown are preliminary and may be revised. A more detailed publication will be released as soon as possible, and further information is available on request.

16. Results of similar surveys, which have been conducted each March and September since March 1979, and also in May 1977 and November 1975, have been published in catalogue 6220.0

17. It is proposed that this survey will next be conducted in March 1986.

18. In order to more closely reflect the population structure shown in the above diagram, the structure of the labour force status classification in Table 1 has been changed from that shown in previous issues of this publication and in catalogue 6220.0. Although there have been no changes in concepts, the definitions have therefore been restructured. As well, the tables in this issue now match the identified groups in the above diagram.

Discontinuities in the series

19. New or amended concepts were introduced in the September 1983 survey, causing a break in series. Refer to the latest issue of catalogue 6220.0 for details.

Reliability of the estimates

20. Estimates in this publication are subject to two sources of error:

- (a) *sampling error*: since the estimates are based on information obtained from occupants of a sample of dwellings, they may differ from the figures that would have been produced if all dwellings had been included in the survey. One measure of the likely difference is given by the *standard error*. More information about this topic is contained in *The Labour Force, Australia* (6203.0). A table of estimated standard errors for this survey follows these notes. Estimates with a standard error of more than about 25 per cent have not been shown in this publication, as the degree of sampling variability would seriously detract from their value for most reasonable uses. Although figures for these small components can, in some cases, be derived by subtraction they should not be regarded as reliable.

(b) *non-sampling error*: inaccuracies may occur because of imperfections in reporting by interviewers and respondents and errors made in the coding and processing of data. These inaccuracies may occur in any enumeration, whether it be a full count or only a sample. Every effort is made to reduce the non-sampling error to a minimum by careful design of questionnaires, intensive training and supervision of interviewers and efficient operating procedures.

Related publications

21. Other ABS publications which may be of interest include:

The Labour Force, Australia (6203.0)—issued monthly (\$1.10, \$1.90 incl. postage)

Labour Force Experience, Australia, during the year ending February 1985 (6206.0)

Job Search Experience of Unemployed Persons, Australia, July 1985 (Preliminary) (6221.0)

Employment, Underemployment and Unemployment 1966-1983, Australia (6246.0) (\$1.80, \$2.60 incl. postage)

22. Current publications produced by the ABS are listed in the *Catalogue of Publications, Australia* (1101.0). The ABS also issues, on Tuesdays and Fridays, a *Publications Advice* (1105.0) which lists publications to be released in the next few days. The Catalogue and Publications Advice are available from any ABS office.

Symbols and other usages

- * subject to sampling variability too high for most practical uses. See paragraph 20 above.
- .. not applicable.

23. Because figures have been rounded, discrepancies may occur between sums of the component items and totals.

A R. BAGNALL
Acting Australian Statistician

STANDARD ERRORS OF ESTIMATES

Size of estimate (Persons)	Approximate standard error of estimate		Size of estimate (Persons)	Approximate standard error of estimate	
	Persons	Per cent of estimate		Persons	Per cent of estimate
4,000	970	24.3	200,000	5,800	2.9
5,000	1,100	22.0	300,000	6,800	2.3
10,000	1,550	15.5	500,000	8,300	1.7
20,000	2,150	10.8	1,000,000	10,700	1.1
50,000	3,250	6.5	2,000,000	13,600	0.7
100,000	4,400	4.4	5,000,000	18,300	0.4

TABLE 1. CIVILIAN POPULATION AGED 15 AND OVER : LABOUR FORCE STATUS, SEPTEMBER 1983 TO SEPTEMBER 1985 (' 000)

	Sept. 1983	March 1984	Sept. 1984	March 1985	Sept. 1985		
					Males	Females	Persons
Civilian population aged 15 and over	11,585.5	11,718.5	11,808.0	11,897.3	5,906.0	6,092.4	11,998.5
Employed	6,350.0	6,504.2	6,572.9	6,634.5	4,166.4	2,617.5	6,783.9
Unemployed	718.7	701.0	621.3	671.7	341.6	246.1	587.7
Persons not in the labour force	4,516.8	4,513.2	4,613.8	4,591.1	1,398.0	3,228.9	4,626.9
With marginal attachment to the labour force	765.6	750.0	726.3	708.3	166.8	573.0	739.7
Wanted to work and were actively looking for work	53.8	25.7	56.4	32.1	24.9	35.5	60.4
Were available to start work within four weeks	21.9	18.7	26.2	22.2	9.2	20.9	30.2
Were not available to start work within four weeks	31.9	7.0	30.2	9.9	15.7	14.6	30.2
Wanted to work but were not actively looking for work and were available to start work within four weeks	711.8	724.3	669.9	676.3	141.9	537.5	679.4
Discouraged jobseekers	118.2	116.1	93.7	96.0	19.5	69.6	89.0
Other	593.6	608.2	576.2	580.3	122.4	468.0	590.4
Without marginal attachment to the labour force	3,751.2	3,763.3	3,887.6	3,882.8	1,231.2	2,655.9	3,887.1
Wanted to work but were not actively looking for work and were not available to start work within four weeks	244.2	224.0	264.1	222.7	72.8	192.4	265.2
Did not want to work	3,225.4	3,275.2	3,365.6	3,399.1	1,054.7	2,325.4	3,380.1
Permanently unable to work	77.3	52.3	56.5	54.4	27.9	19.9	47.8
Institutionalised(a) and boarding school pupils	204.3	211.8	201.4	206.6	75.9	118.2	194.1

(a) Includes some patients in hospitals and sanatoria and inmates of reformatories, jails etc.

TABLE 2. PERSONS NOT IN THE LABOUR FORCE WITH MARGINAL ATTACHMENT TO THE LABOUR FORCE : MAIN REASON FOR NOT ACTIVELY LOOKING FOR WORK AND INTENTION TO LOOK FOR WORK IN THE NEXT TWELVE MONTHS, SEPTEMBER 1985 (' 000)

	Intention to look for work in the next twelve months					Total		
	Intended to look	Might look	Would not look	Did not know	Not asked(a)	Males	Females	Persons
Wanted to work and were actively looking for work	60.4	24.9	35.5	60.4
Were available to start work within four weeks	30.2	9.2	20.9	30.2
Were not available to start work within four weeks	30.2	15.7	14.6	30.2
Wanted to work but were not actively looking for work and were available to start work within four weeks	275.6	134.8	208.5	37.2	23.2	141.9	537.5	679.4
Main reason for not actively looking for work								
Had a job to go to	11.2	*	8.4	11.2
Personal reasons	124.1	47.9	70.5	13.7	..	97.5	158.7	256.2
Own ill health, disability, pregnancy	28.0	16.6	20.2	4.4	..	29.6	39.5	69.1
Attending an educational institution	67.0	14.5	17.0	*	..	51.4	50.9	102.3
Had no need to work	9.2	8.9	20.8	*	..	7.2	34.0	41.3
Give others a chance	*	*	*	*	..	*	6.0	6.2
Welfare payments/pension may be affected	4.7	4.1	8.3	*	..	4.9	14.7	19.6
Moved house/holidays	14.3	*	*	*	..	4.2	13.6	17.8
Family reasons	82.8	53.4	96.8	15.5	..	4.3	244.1	248.4
Ill health of other than self	5.1	*	4.6	*	..	*	13.2	14.8
Unable to find suitable childcare	19.0	13.1	35.1	5.4	..	*	71.8	72.5
Children too young/preferred to look after children	45.5	28.3	46.4	5.8	..	*	124.6	126.1
Other family considerations	13.2	8.4	10.7	*	..	*	34.4	34.9
Discouraged jobseekers	37.7	20.8	25.6	5.0	..	19.5	69.6	89.0
Considered too young or too old by employers	8.6	5.8	15.4	*	..	9.8	22.4	32.2
Difficulties with language or ethnic background	*	*	*	*	..	*	4.2	5.0
Lacked necessary schooling, training, skills or experience	*	*	*	*	..	*	7.4	8.9
No jobs in locality or line of work	13.1	6.9	4.8	*	..	4.5	21.6	26.0
No jobs at all	9.9	*	*	*	..	*	14.0	16.8
No jobs in suitable hours	10.9	4.3	*	*	..	*	15.6	18.4
Other reasons	17.8	6.5	10.6	*	..	10.6	25.6	36.3
Did not know	*	*	*	*	..	*	7.2	8.0
Not asked(b)	12.0	*	8.3	12.0
Total	275.6	134.8	208.5	37.2	83.6	166.8	573.0	739.7

(a) Comprises persons who had a job to go to, persons who took active steps to find work and persons as defined in footnote (b). (b) Persons who had a job but, up to the end of survey week, had been away from work without pay for four weeks or longer and had not been actively looking for work.

TABLE 3. PERSONS NOT IN THE LABOUR FORCE WITH MARGINAL ATTACHMENT TO THE LABOUR FORCE: SUMMARY OF CHARACTERISTICS, SEPTEMBER 1985 ('000)

	Persons who wanted to work and were actively looking for work			Persons who wanted to work but were not actively looking for work and were available to start work within four weeks			Persons with marginal attachment to the labour force		
	Were available to start work within four weeks	Were not available to start work within four weeks	Total	Discouraged jobseekers	Other	Total	Males	Females	Persons
Age group (years)—									
15-19	5.8	19.2	24.9	5.3	108.1	113.4	67.3	70.9	138.3
20-24	5.3	6.5	11.8	5.4	58.5	63.9	17.4	58.3	75.7
25-34	9.4	*	11.7	14.0	178.2	192.2	13.8	190.0	203.8
35-44	5.1	*	6.4	17.2	122.6	139.7	12.7	133.4	146.1
45-54	*	*	*	17.9	61.1	79.0	14.0	68.6	82.6
55-64	*	*	*	17.2	44.9	62.1	23.7	40.3	64.0
65 and over	*	*	*	12.0	17.1	29.1	17.7	11.4	29.1
Family status—									
Member of a family	22.9	25.2	48.1	74.1	523.2	597.3	130.2	515.3	645.5
Husband or wife	12.0	*	15.4	55.1	340.3	395.5	45.4	365.5	410.9
With children aged 0-14 present	8.6	*	11.1	22.4	252.1	274.6	14.1	271.6	285.7
Without children aged 0-14 present	*	*	4.3	32.7	88.2	120.9	31.3	93.9	125.2
Not-married family head	*	*	4.1	9.6	70.2	79.8	5.3	78.6	83.9
With children aged 0-14 present	*	*	*	5.0	60.0	65.0	*	65.1	68.2
Without children aged 0-14 present	*	*	*	4.6	10.2	14.9	*	13.5	15.7
Child of family head	7.0	20.4	27.4	7.1	108.6	115.8	76.3	66.9	143.2
Other relative of family head	*	*	*	*	4.0	6.3	*	4.3	7.5
Not a member of a family	*	*	6.0	12.2	33.8	46.0	24.2	27.8	52.0
Living alone	*	*	*	9.9	21.1	31.0	15.4	18.1	33.5
Not living alone	*	*	*	*	12.7	15.0	8.8	9.7	18.5
Not family coded	*	*	6.3	*	33.3	36.0	12.4	29.9	42.3
Type of work preferred—									
Full-time	14.8	21.2	36.0	21.2	122.5	143.6	85.8	93.9	179.7
Part-time	14.1	7.7	21.9	59.9	449.4	509.3	74.6	456.6	531.1
No preference	*	*	*	7.9	18.5	26.4	6.4	22.6	28.9
Whether looked for work in the last 12 months(a)—									
Had looked for work	30.2	30.2	60.4	32.0	121.7	153.6	62.2	151.8	214.0
Less than 5 weeks ago	30.2	30.2	60.4	7.5	32.7	40.2	33.5	67.1	100.6
5 and less than 8 weeks ago	8.1	31.3	39.3	11.6	27.8	39.3
8 and less than 13 weeks ago	7.0	24.0	30.9	7.1	23.8	30.9
13 to 52 weeks ago	9.4	33.7	43.1	10.0	33.1	43.1
Had not looked for work	57.1	468.7	525.7	104.5	421.2	525.7
Time since last job—									
Had had a job	26.2	15.3	41.5	80.6	490.0	570.6	112.9	499.2	612.0
Under 12 months	13.5	9.7	23.2	13.7	123.3	137.0	48.9	111.4	160.2
Under 6 months	8.8	*	12.6	6.4	72.7	79.1	28.4	63.4	91.7
6 and under 12 months	4.7	5.9	10.6	7.3	50.6	57.9	20.5	48.0	68.5
1 and under 3 years	5.8	*	9.3	14.6	95.2	109.7	27.4	91.6	119.0
3 and under 10 years	5.0	*	6.6	29.1	179.1	208.1	30.7	184.0	214.7
10 years or more	*	*	*	23.3	92.5	115.7	5.9	112.2	118.1
Had never had a job	4.0	14.9	18.9	8.4	100.4	108.8	53.9	73.8	127.7
Reason for leaving last job—									
Retrenched/made redundant/lost job	*	*	5.4	14.8	51.5	66.3	17.5	54.3	71.7
Seasonal or temporary job returned to studies	4.8	*	6.3	10.2	47.3	57.6	10.6	53.3	63.9
Retired/did not want to work any longer	*	7.2	8.9	*	13.3	14.2	14.5	8.6	23.1
Unsatisfactory work arrangements	*	*	*	9.7	27.6	37.3	17.3	20.4	37.8
Own ill health or disability	*	*	*	4.1	28.7	32.8	8.2	26.3	34.5
To get married	*	*	*	5.6	47.1	52.7	24.5	31.7	56.2
Pregnancy/to have children	*	*	*	5.7	35.3	40.9	*	42.5	42.5
To look after family, house or someone else	*	*	4.6	9.2	132.9	142.1	*	146.7	146.7
Travelled, moved house, spouse transferred	*	*	*	5.4	33.9	39.3	*	39.0	41.3
Sold business/farm	4.3	*	5.3	10.3	37.8	48.1	6.6	46.8	53.4
Other reasons	*	*	*	*	10.3	12.0	*	9.6	12.7
Had never had a job	*	*	*	*	12.3	15.3	4.4	11.8	16.3
Not asked(b)	4.0	14.9	18.9	8.4	100.4	108.8	53.9	73.8	127.7
	*	12.0	12.0	*	8.3	12.0
Total	30.2	30.2	60.4	89.0	590.4	679.4	166.8	573.0	739.7

(a) Persons who had left a job in the last twelve months were only asked whether they had looked for work since that job. (b) Persons who had a job but, up to the end of survey week, had been away from work without pay for four weeks or longer and had not been actively looking for work.

TABLE 4. PERSONS NOT IN THE LABOUR FORCE WHO WANTED TO WORK BUT WERE NOT ACTIVELY LOOKING FOR WORK AND WERE NOT AVAILABLE TO START WORK WITHIN FOUR WEEKS : REASON NOT AVAILABLE TO START WORK WITHIN FOUR WEEKS, INTENTION TO LOOK FOR WORK IN THE NEXT TWELVE MONTHS AND TYPE OF WORK PREFERRED, SEPTEMBER 1985
(' 000)

<i>Reason not available to start work within four weeks</i>	<i>Intention to look for work in the next twelve months</i>					<i>Type of work preferred</i>			<i>Total</i>
	<i>Intended to look</i>	<i>Might look</i>	<i>Would not look</i>	<i>Did not know</i>	<i>Not asked(a)</i>	<i>Full-time</i>	<i>Part-time</i>	<i>No preference</i>	
Personal reasons	63.5	28.0	45.8	5.8	6.7	70.1	70.8	8.9	149.8
Own ill health, etc.	17.9	16.4	28.5	*	5.6	29.9	35.7	6.3	71.9
Studying	40.2	8.7	12.9	*	*	39.4	23.0	*	64.4
At school	33.5	7.9	12.1	*	*	34.5	19.8	*	56.1
Other educational institution	6.7	*	*	*	*	4.8	*	*	8.3
Moved house/holidays	5.5	*	4.4	*	*	*	12.1	*	13.6
Family reasons	19.2	17.0	44.8	4.5	7.8	11.8	78.8	*	93.3
Ill health of other than self	*	*	4.0	*	*	*	6.8	*	9.9
Unable to find suitable child care	*	*	4.7	*	*	*	10.3	*	12.4
Children too young/preferred to look after children	14.5	10.3	36.1	*	7.2	7.2	61.7	*	70.9
Other reasons	5.7	*	10.5	*	*	4.5	16.4	*	22.1
Total									
Males	34.2	14.2	20.1	*	*	46.6	21.3	4.9	72.8
Females	54.3	33.7	80.9	10.2	13.2	39.8	144.7	7.8	192.4
Persons	88.5	47.9	101.0	12.0	15.8	86.5	166.0	12.7	265.2

(a) Persons who had a job but, up to the end of survey week, had been away from work without pay for four weeks or longer and had not been actively looking for work.

